



# FiltaLite

Energy Efficient Light Control



adding daylight to life

Proudly Australian Made & Owned





# FiltaLite

## Energy Efficient Light Control

## Year-round Radiant Sun and Heat Controller

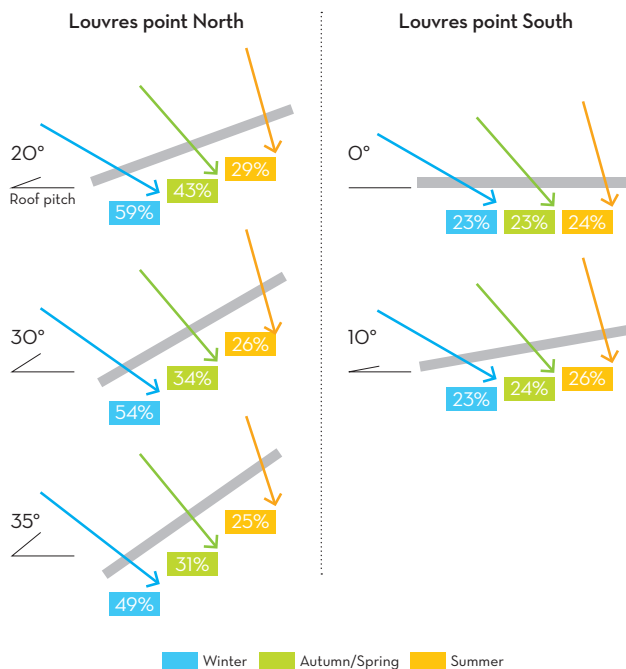
- FiltaLite Skylights are ideally suited for commercial applications.
- FiltaLite provides minimal summer radiant heat penetration and maximises winter light transmission.
- FiltaLite's 16mm Multi-Wall polycarbonate panel is fitted with fixed diagonal louvres under a clear or opal dome.
- Suitable for all roof types and roof pitches.
- Available in Zinalume®, Colorbond® and galvanised finishes.

### FiltaLite Standard Size Chart\*

size (mm)	actual throat size (sq.m)	ventilation area (sq.m)
500 X 500	0.25	0.081
600 X 600	0.36	0.095
800 X 800	0.64	0.122
900 X 900	0.81	0.136
1000 X 1000	1	0.149
1200 X 1200	1.44	0.176
500 X 800	0.4	0.102
500 X 900	0.45	0.104
500 X 1000	0.5	0.112
600 X 800	0.48	0.108
600 X 1200	0.72	0.136
800 X 1200	0.96	0.149
900 X 1200	1.08	0.156

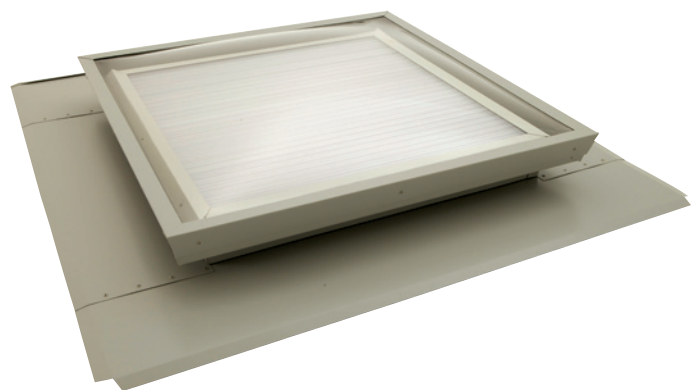
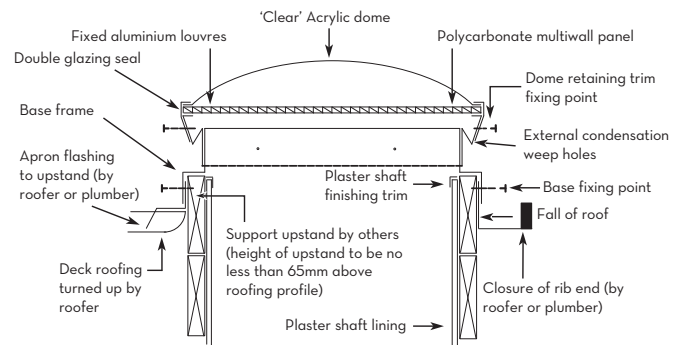
\* Other sizes available

### Recommended Arrangements to Minimise Heat Gain



#### Important Radiant Heat Gain %

'Unisearch' - University of New South Wales  
 Radiant Heat Penetration (%) of skylights in roof with North aspect, noon solar performance in Melbourne.  
 Test data reproduced with kind permission from Atlas Skylights



Tested to AS4285-2007 (up to 1500x1500mm)



125 Chesterville Road  
 Moorabbin VIC 3189  
 Tel (03) 9555 2388  
 Fax (03) 9532 3470  
 Email [info@belleskylights.com.au](mailto:info@belleskylights.com.au)  
 Web [www.belleskylights.com.au](http://www.belleskylights.com.au)

