

DSD/DSH/DSC > AZ01

SERVICE MANUAL



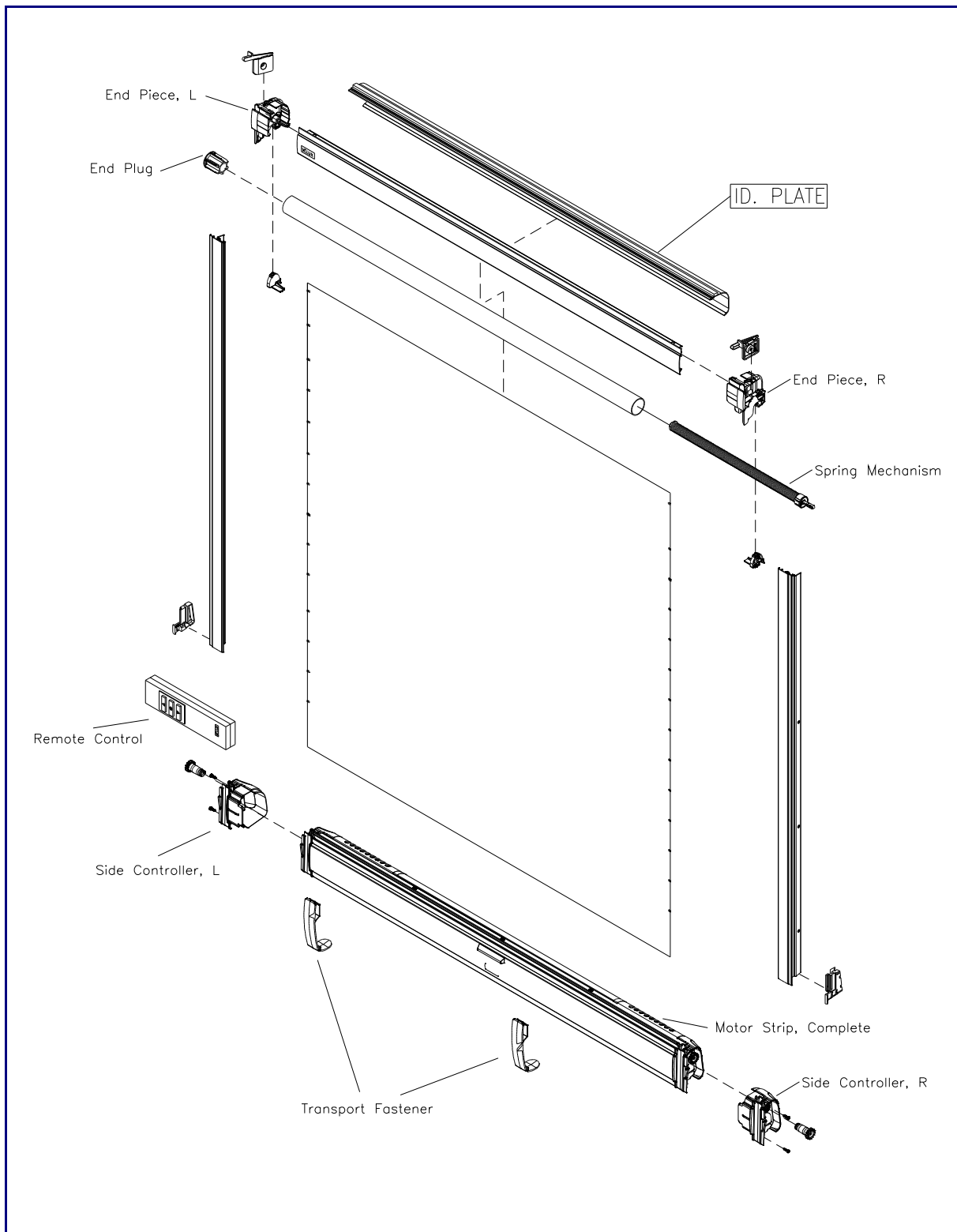
Contents

Overview.....	page	3
Locking Spring Mechanism when doing service.....	-	4
Fitting Transport Fastener	-	5

Replacement of various components

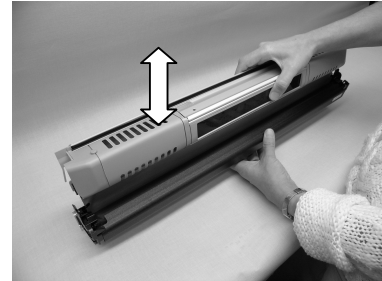
Replacing Side Controller R+L.....	page	6
Replacing Motor Strip, complete.....	-	8
Replacing End Piece R+L.....	-	10
Replacing Spring Mechanism.....	-	13
Replacing End Plug	-	16
Replacing Gasket	-	19

Overview



Locking Spring Mechanism when doing service

Turn the blind upside down (as if the blind was installed in a window placed in cleaning position). Pull out the blind slightly and let it roll back in again. This way the spring mechanism locks.



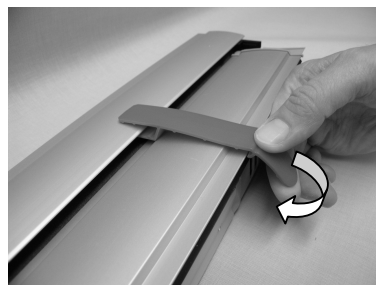
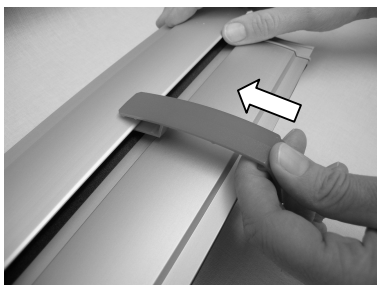
Before the blind is installed in the window again after completed service the initial tension must be activated again.

Turn the blind as if it was installed in a window and pull the control rail. The initial tension of the blind is now active again.

Fitting of Transport Fastener

1

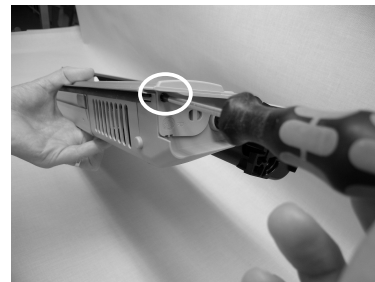
Place the transport fastener on the cover strip as shown in the picture and press the lower part into place around the motor strip.



Replacing Side Controller, R+L

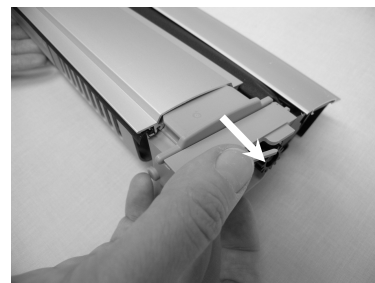
1

Unscrew the two screws indicated in the picture.



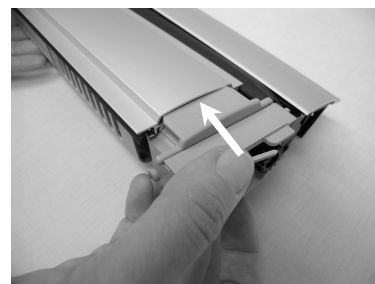
2

Pull the side controller off the motor strip.



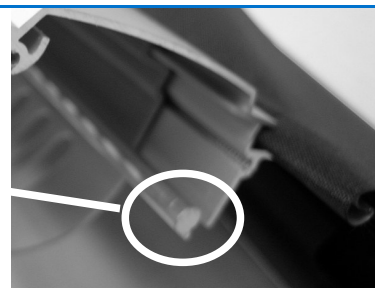
3

Fit the new side controller on the motor strip.



4

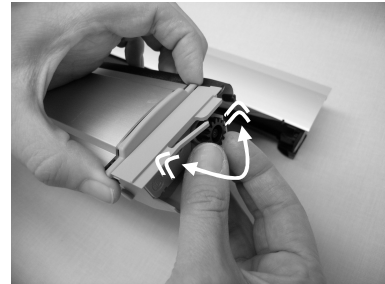
Make sure that the driving shaft meshes correctly with the toothed wheel.



Replacing Side Controller, R+L

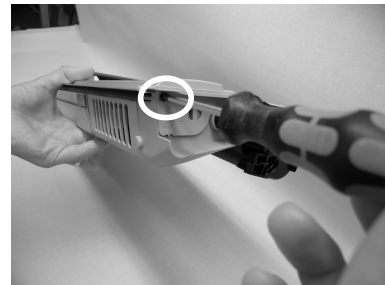
5

Twist the toothed wheel back and forth a little while the side controller is installed in order to secure correct interaction between the shaft and toothed wheel.



6

Screw in the two screws indicated in the picture.

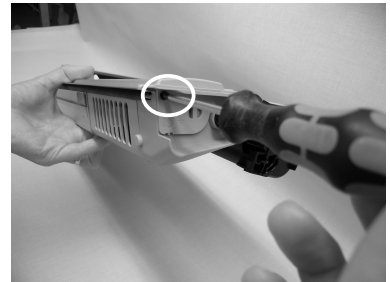


Replacing Motor Strip, Complete

1

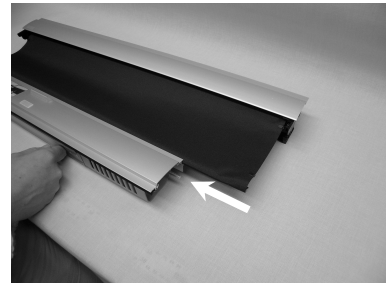
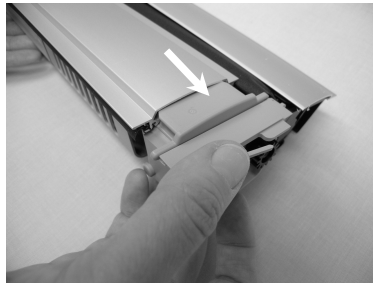
Lock the spring mechanism.

Unscrew the two screws indicated in the picture.



2

Pull the side controller off the motor strip and pull the motor strip off the cloth.



3

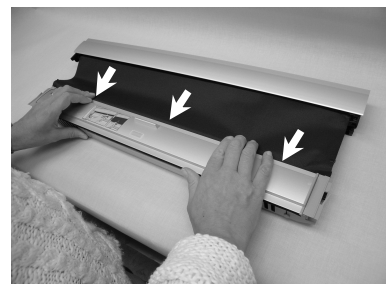
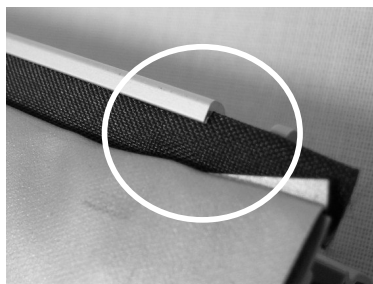
Fold the cloth around the plastic strip as shown in the picture.

Place the cloth in the groove on the new motor strip.



4

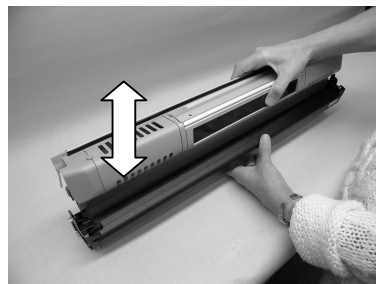
Press the cloth into place along the entire motor strip.



Replacing Motor Strip, Complete

5

Activate the spring mechanism again.

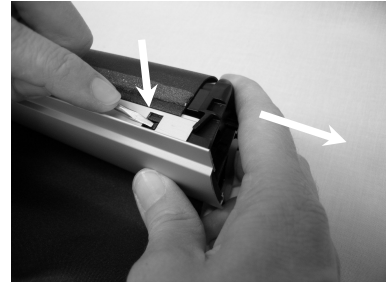


Replacing End Piece, R+L

1

Lock the spring mechanism.

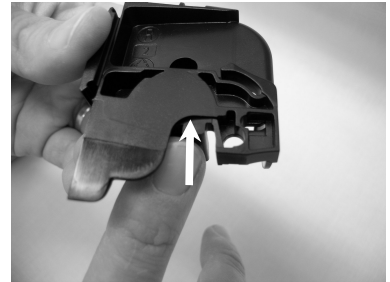
Push down the snap on the end piece and pull the end piece off the cover strip.



2

Install the cord retainer in the new end piece before the end piece is installed in the blind.

Turn the cord retainer as shown in the picture. A clear click can be heard when the cord retainer is installed correctly.



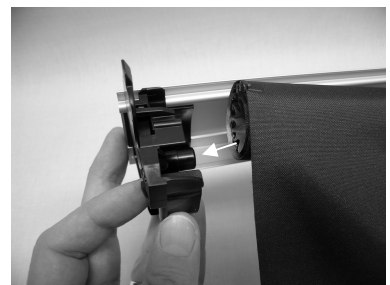
3

Remove the cassette bar from the cover strip before the end piece is installed. This will make the installation easier.



4

Place the cloth roll in the left end piece.



Replacing End Piece, R+L

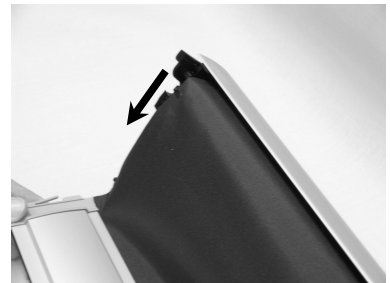
5

Place the right end piece in the cover strip. Make sure that the spring spike is facing the right direction in relation to the end piece.



6

Make sure that the cloth is guided correctly around the end pieces before the blind is assembled.



7

Install the end piece fully in the right side.



8

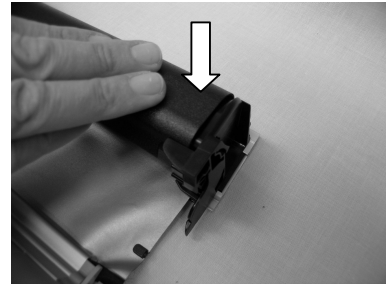
Place the flap of the cassette bar in the notch on the cover strip.



Replacing End Piece, R+L

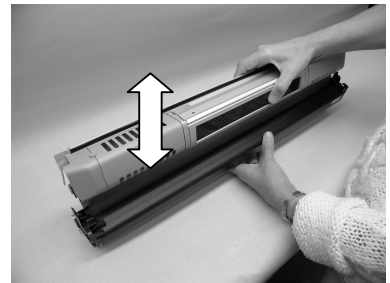
9

Press the cassette bar into place in both sides. A clear click can be heard when the cassette bar is installed correctly.



10

Activate the spring mechanism again.

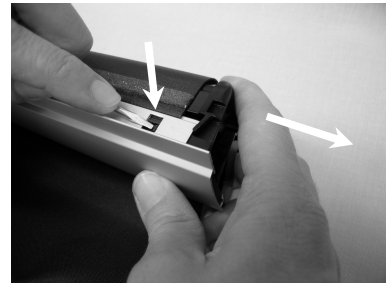


Replacing Spring Mechanism

1

Lock the spring mechanism.

Push down the snap on the end piece and pull the end piece off the cover strip.



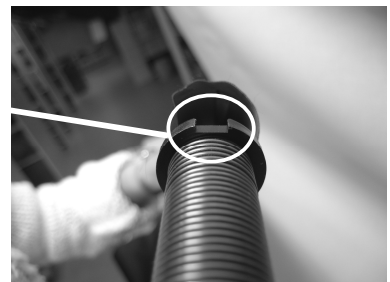
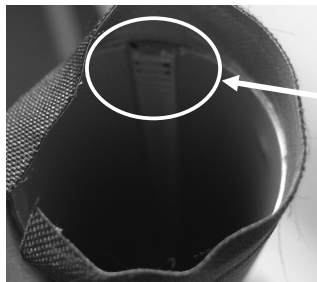
2

Pull the spring mechanism out of the cloth tube.



3

Install the new spring mechanism. The recess in the rear bearing and in the cloth tube must fit together.

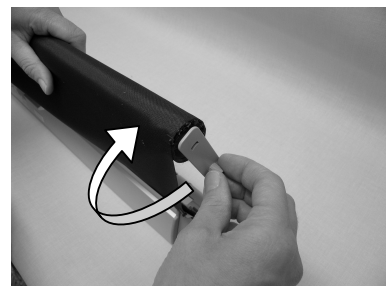


4

Press the spring into place and create pre-tension.

See service solution concerning initial tension.

The spring mechanism is locked by slowly turning the key anticlockwise when the required pre-tension has been reached.



Replacing Spring Mechanism

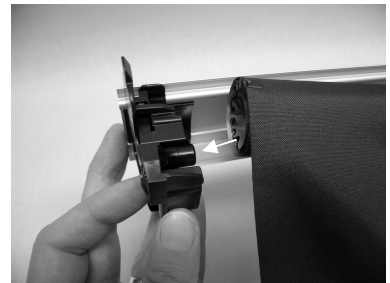
5

Remove the cassette bar from the cover strip before the end piece is installed. This will make the installation easier.



6

Place the cloth roll in the left end piece.



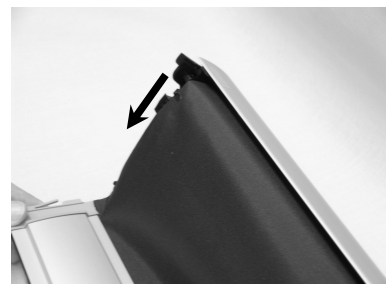
7

Place the right end piece in the cover strip. Make sure that the spring spike is facing the right direction in relation to the end piece.



8

Make sure that the cloth is guided correctly around the end pieces before the blind is assembled.



Replacing Spring Mechanism

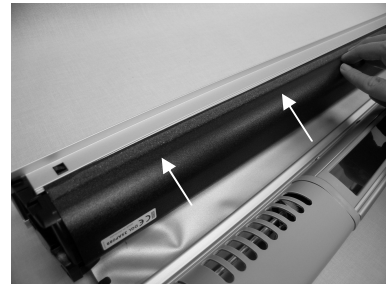
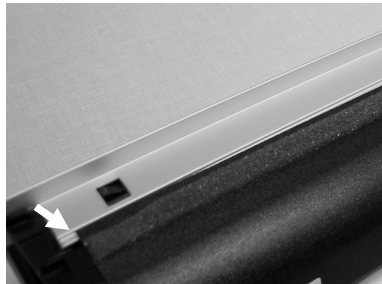
9

Install the end piece fully in the right side.



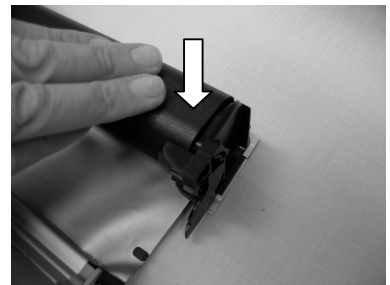
10

Place the flap of the cassette bar in the notch on the cover strip.



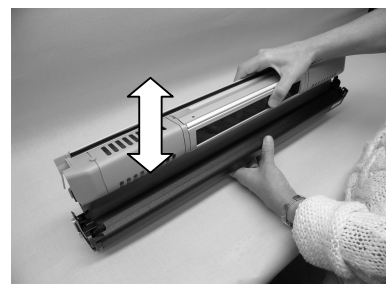
11

Press the cassette bar into place in both sides. A clear click can be heard when the cassette bar is installed correctly.



12

Activate the spring mechanism again.

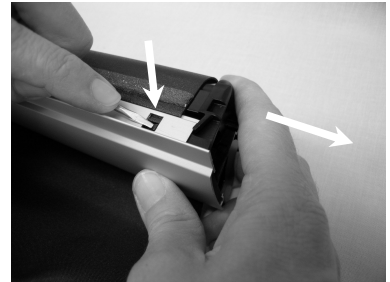


Replacing End Plug

1

Lock the spring mechanism.

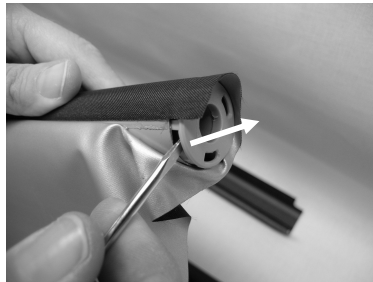
Push down the snap on the end piece and pull the end piece off the cover strip.



2

Dismount the end plug and press a new end plug into place.

Make sure that the cloth does not get caught.



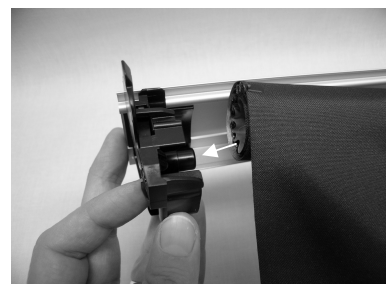
3

Remove the cassette bar from the cover strip before the end piece is installed. This will make the installation easier.



4

Place the cloth roll in the left end piece.



Replacing End Plug

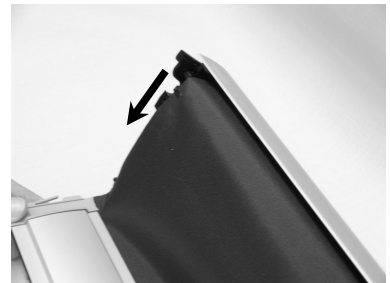
5

Place the right end piece in the cover strip. Make sure that the spring spike is facing the right direction in relation to the end piece.



6

Make sure that the cloth is guided correctly around the end pieces before the blind is assembled.



7

Install the end piece fully in the right side.



8

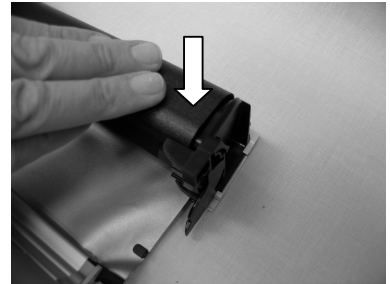
Place the flap of the cassette bar in the notch on the cover strip.



Replacing End Plug

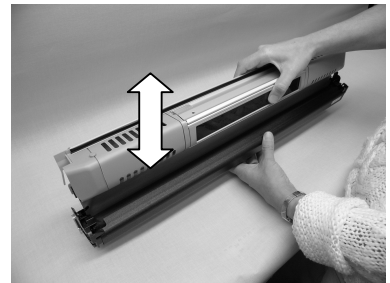
9

Press the cassette bar into place in both sides. A clear click can be heard when the cassette bar is installed correctly.



10

Activate the spring mechanism again.

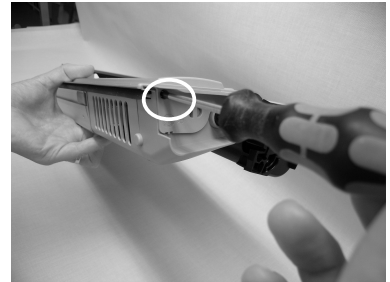


Replacing Gasket

1

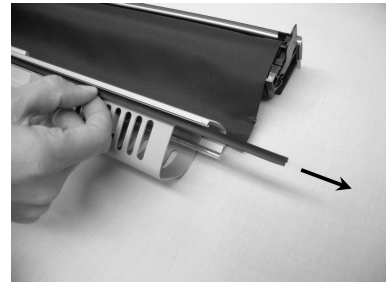
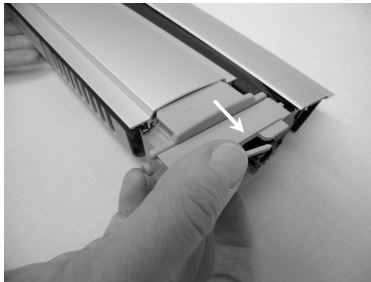
Lock the spring mechanism.

Unscrew the two screws indicated in the picture.



2

Pull the end piece off the motor strip and pull the gasket out of the groove in the motor strip.



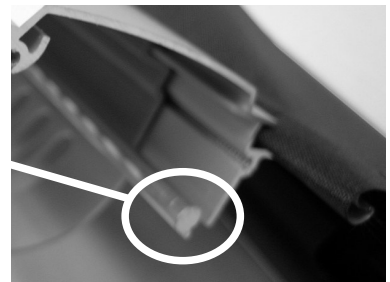
3

Cut the spare part gasket in the correct length and install the new gasket in the groove on the motor strip as shown in the picture.



4

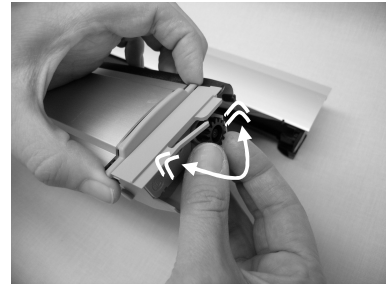
Make sure that the driving shaft meshes correctly with the toothed wheel.



Replacing Gasket

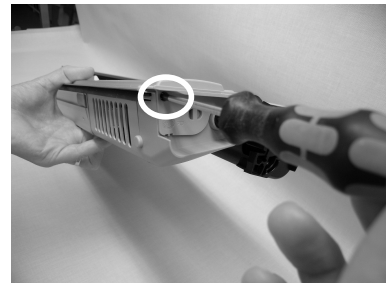
5

Twist the toothed wheel back and forth a little while the side controller is being installed in order to secure correct interaction between the shaft and toothed wheel.



6

Screw in the two screws indicated in the picture.



7

Activate the spring mechanism again.

