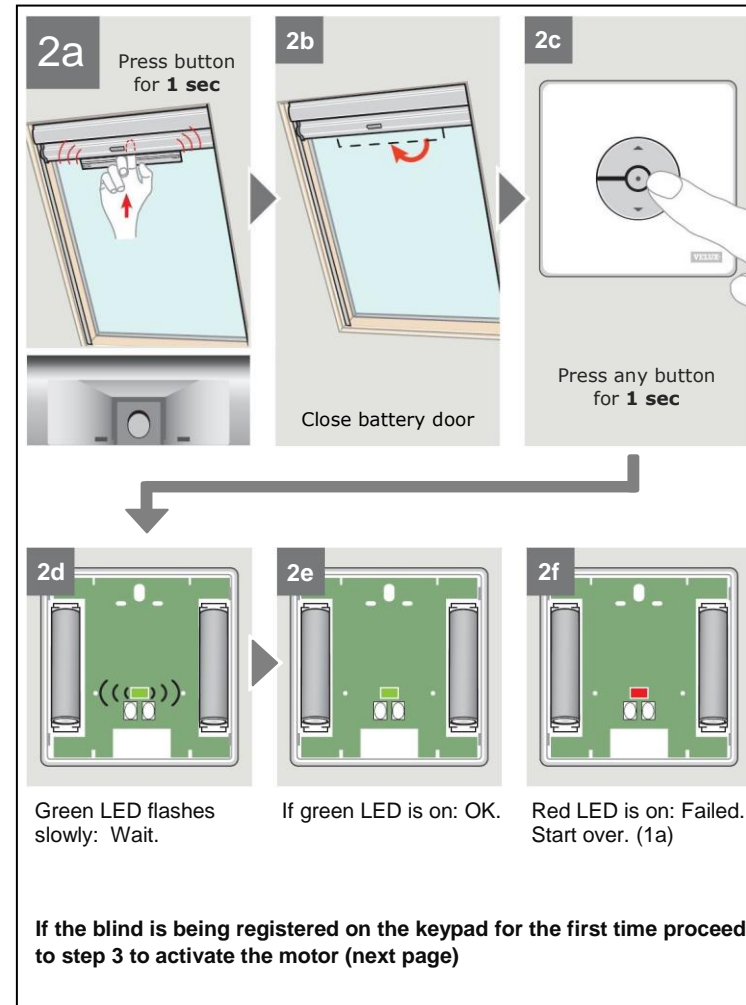
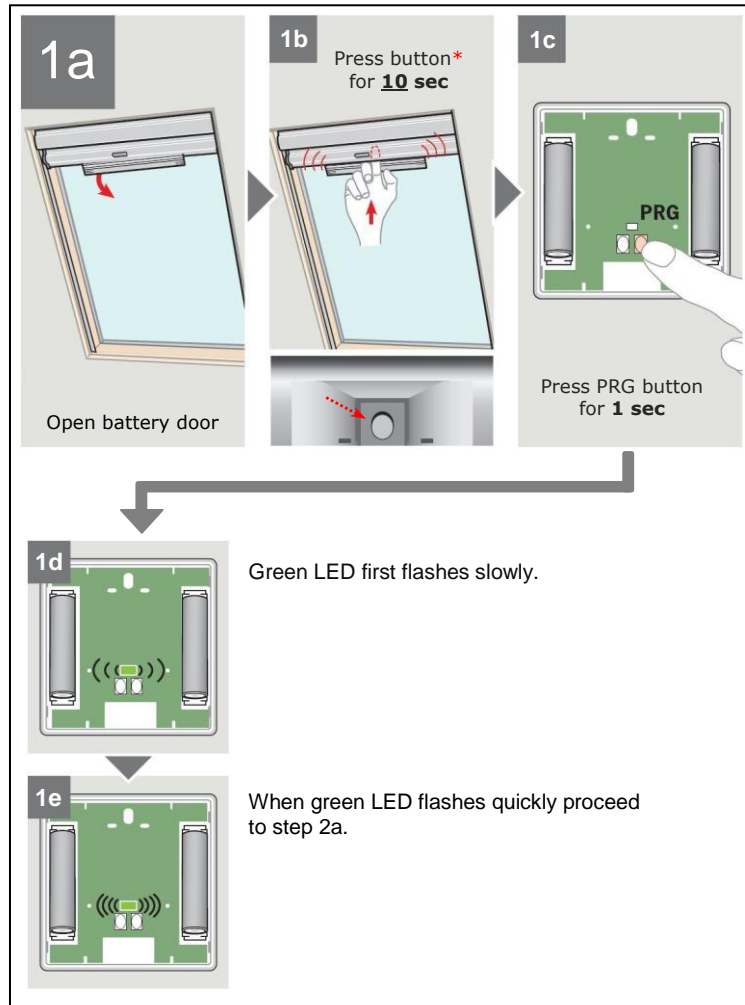


REGISTRATION INSTRUCTIONS FOR DSD/DSH BLINDS

These instructions will help you to register the solar powered blind onto the keypad. For full installation instructions of the blind refer to instruction booklet DSD or DSH.



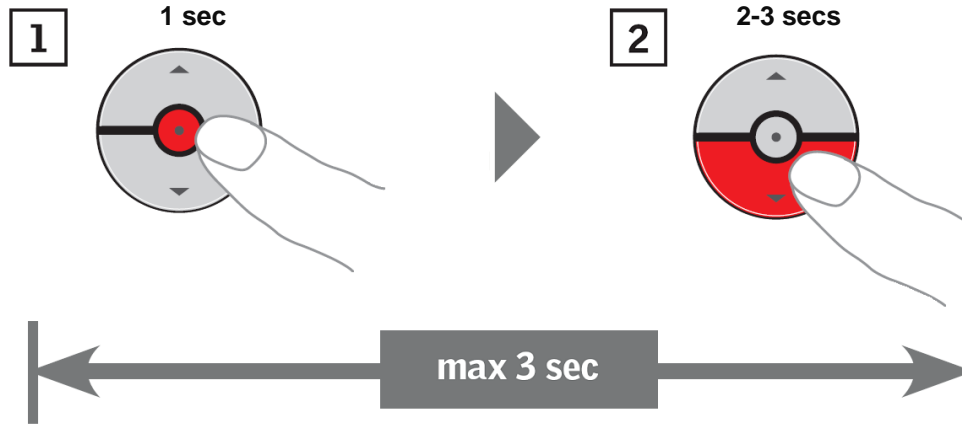
* blind button is found inside the battery cavity – behind the aluminium fascia.

See next page for FULL reset of products

3

To begin operation:

After green light goes off (2e), press the stop button once and then press the down button for 2-3 secs. (*buttons must be pressed within 3 seconds of each other*)



RESETTING THE PRODUCTS

If the products cannot be configured then perform a complete reset of the products.

Step 1: Press & hold **PRG** button on the wallpad for at least 5 seconds. LED flashes red slowly then stays red. (*reset of the wallpad is complete*)

Step 2: Press & hold the blind button for 10 seconds. (*reset of the blind is complete*)

Now proceed to step 1c. (first page)