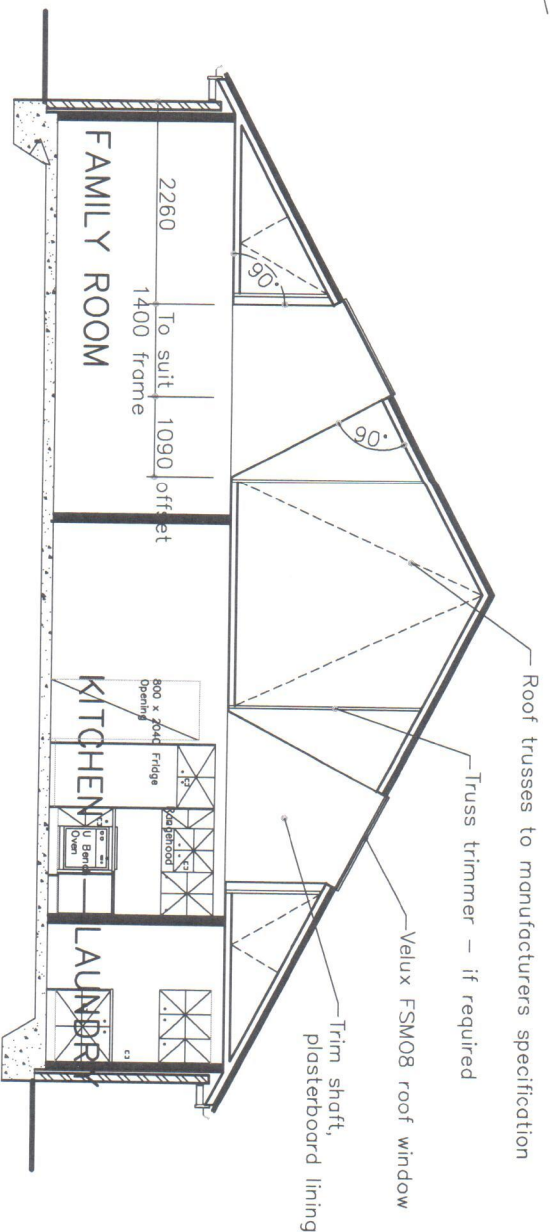
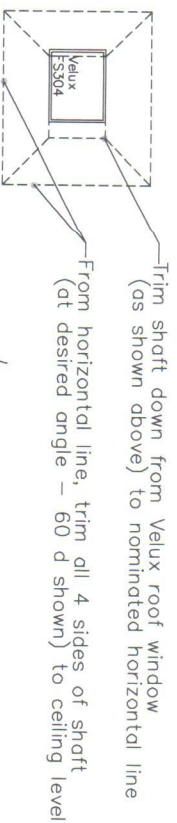


Dimension to suit width and number of Velux roof windows used
 * allow 100 mm between each unit *

ROOF PLAN
MULTIPLE VELUX ROOF WINDOW

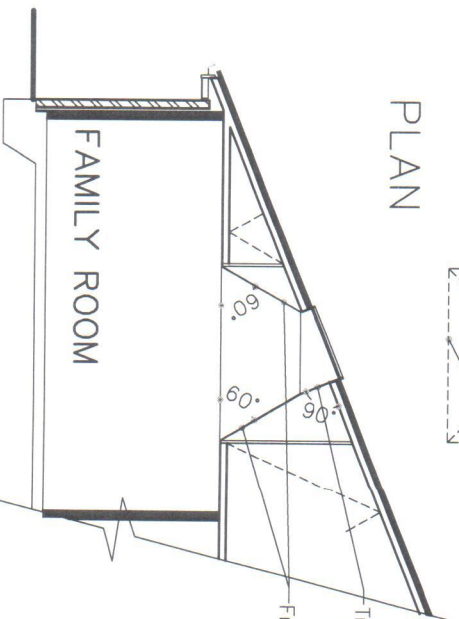


SECTION - VELUX FSM08 ROOF WINDOW

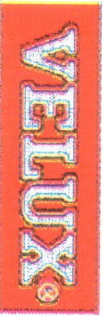


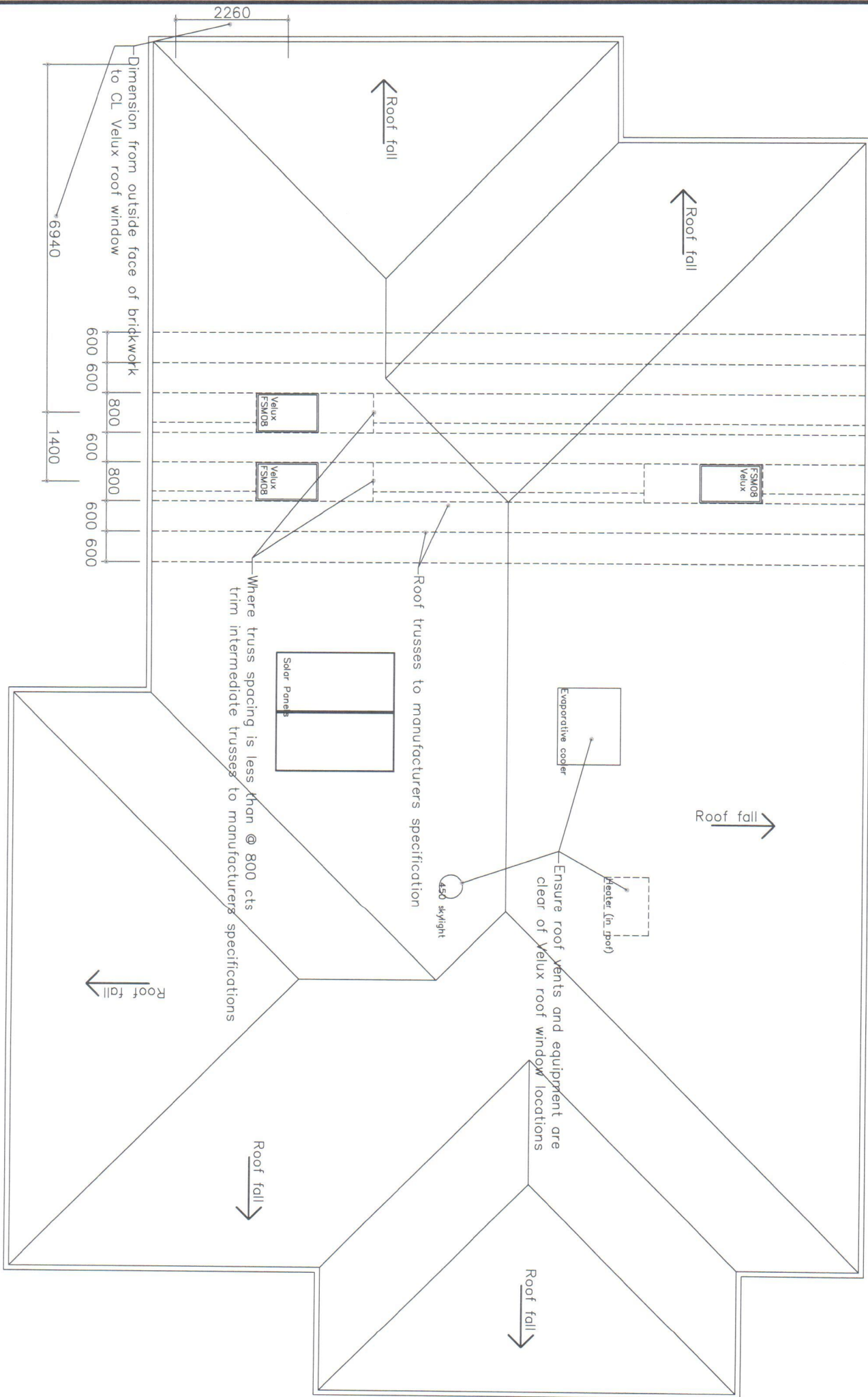
PLAN

Trim shaft down from Velux roof window (as shown above) to nominated horizontal line
 From horizontal line, trim all 4 sides of shaft (at desired angle - 60 d shown) to ceiling level

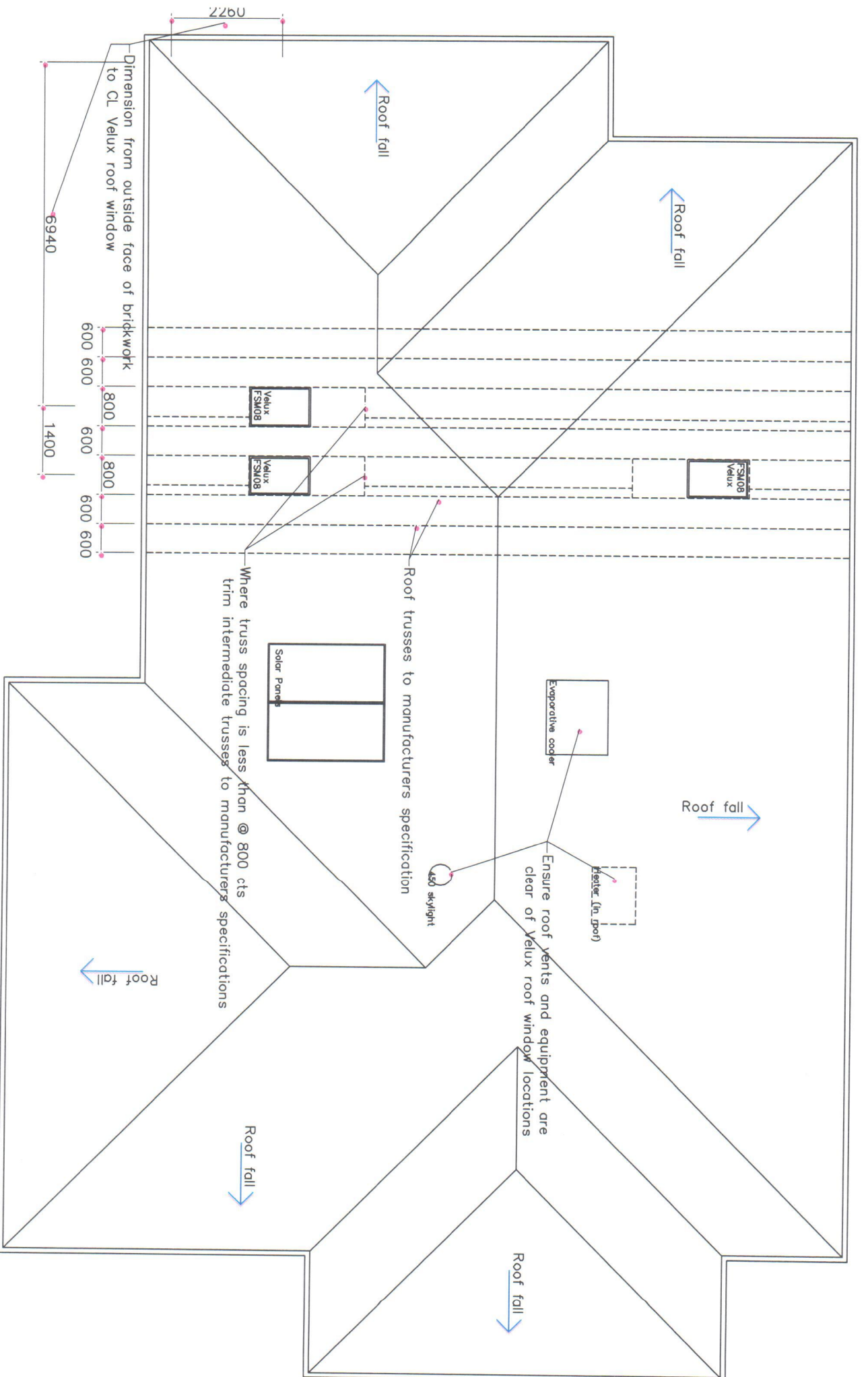


SECTION - SPLAYED SHAFT

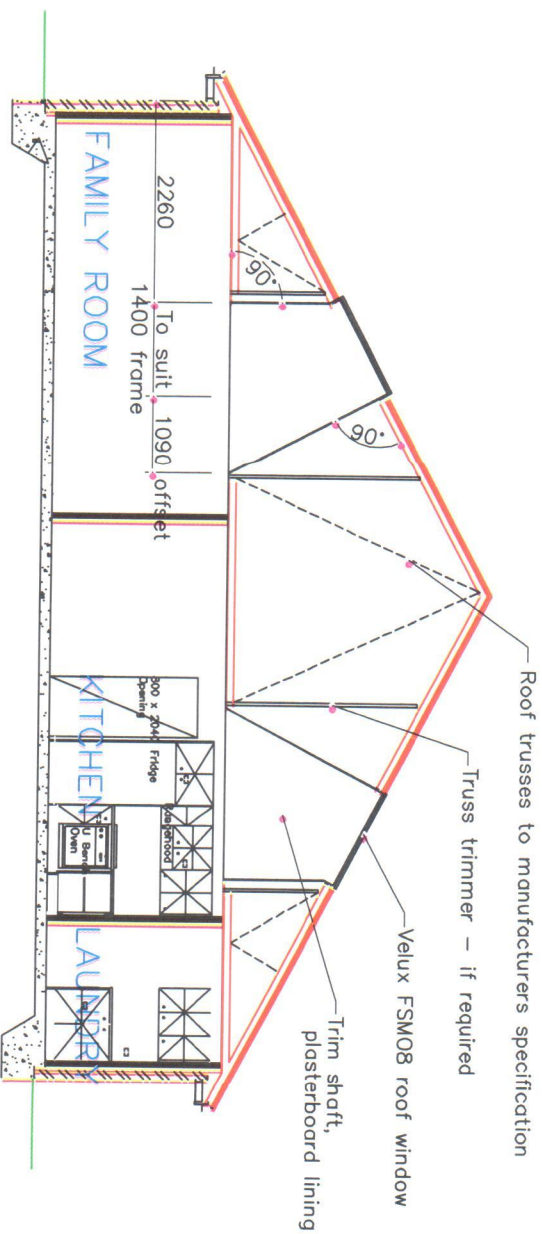
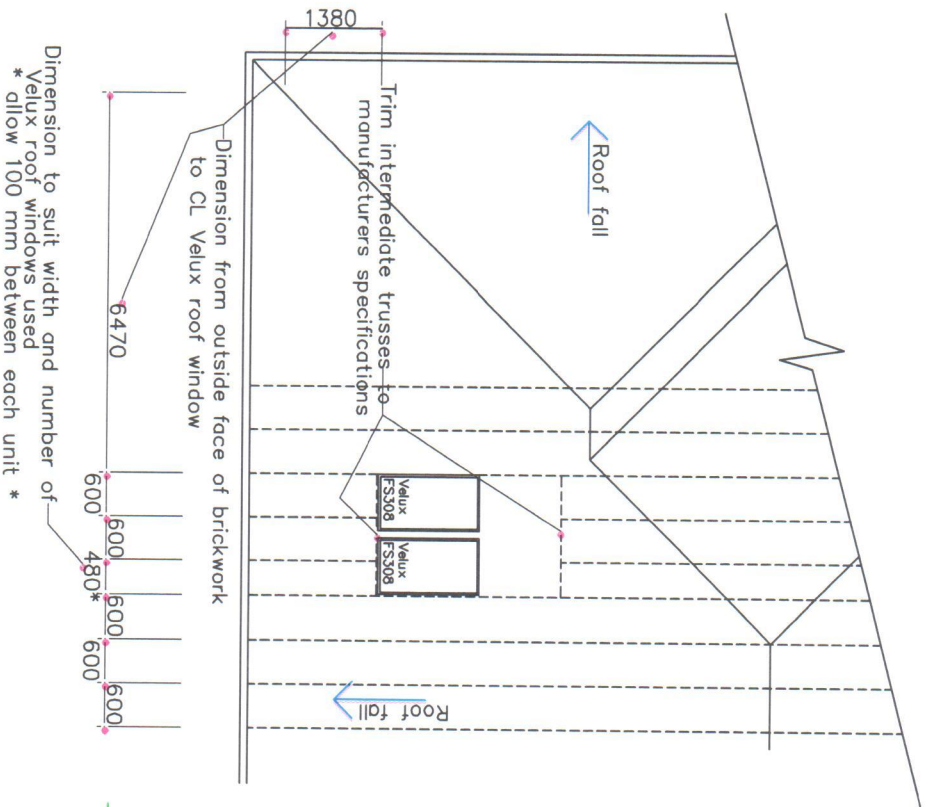




ROOF PLAN – VELUX FSM08 ROOF WINDOW



ROOF PLAN – VELUX FSM08 ROOF WINDOW

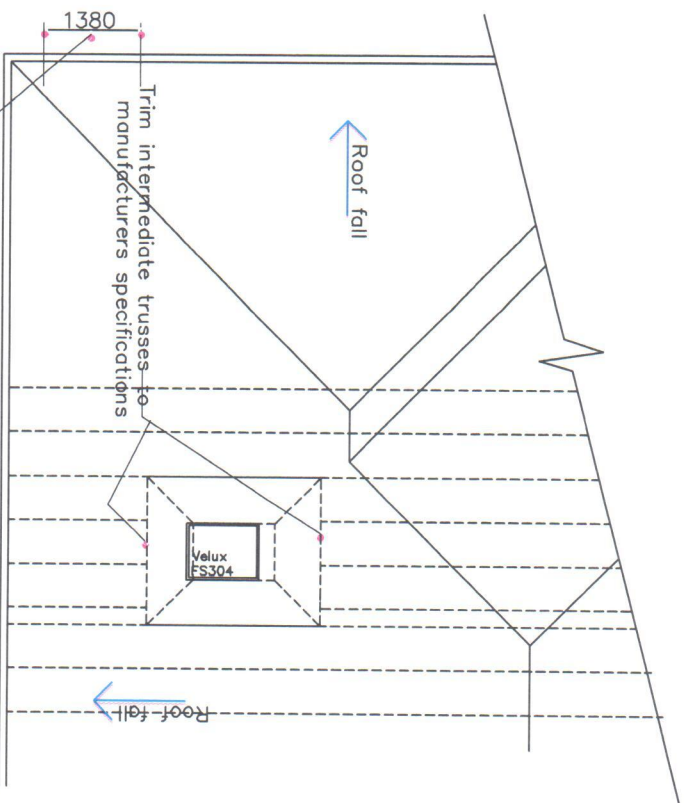


ROOF PLAN

MULTIPLE VELUX ROOF WINDOW

SECTION

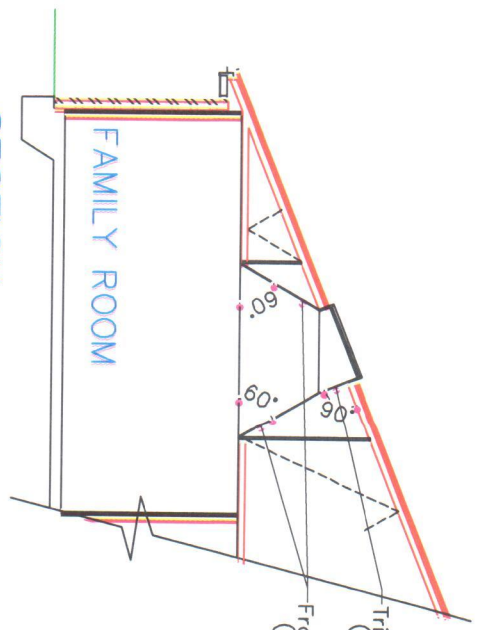
VELUX FSM08 ROOF WINDOW



Dimension from outside face of brickwork to CL Velux roof window

Dimension to suit size of Velux unit used and depth of roof space

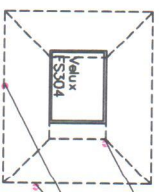
ROOF PLAN
SPLAYED SHAFT



Trim shaft down from Velux roof window (as shown above) to nominated horizontal line

From horizontal line, trim all 4 sides of shaft (at desired angle – 60 d shown) to ceiling level

SECTION
SPLAYED SHAFT



Trim shaft down from Velux roof window (as shown above) to nominated horizontal line

From horizontal line, trim all 4 sides of shaft (at desired angle – 60 d shown) to ceiling level

PLAN
SPLAYED SHAFT

